



Presbyterian Research Centre

The Archive & Library for the
Presbyterian Church of Aotearoa NZ



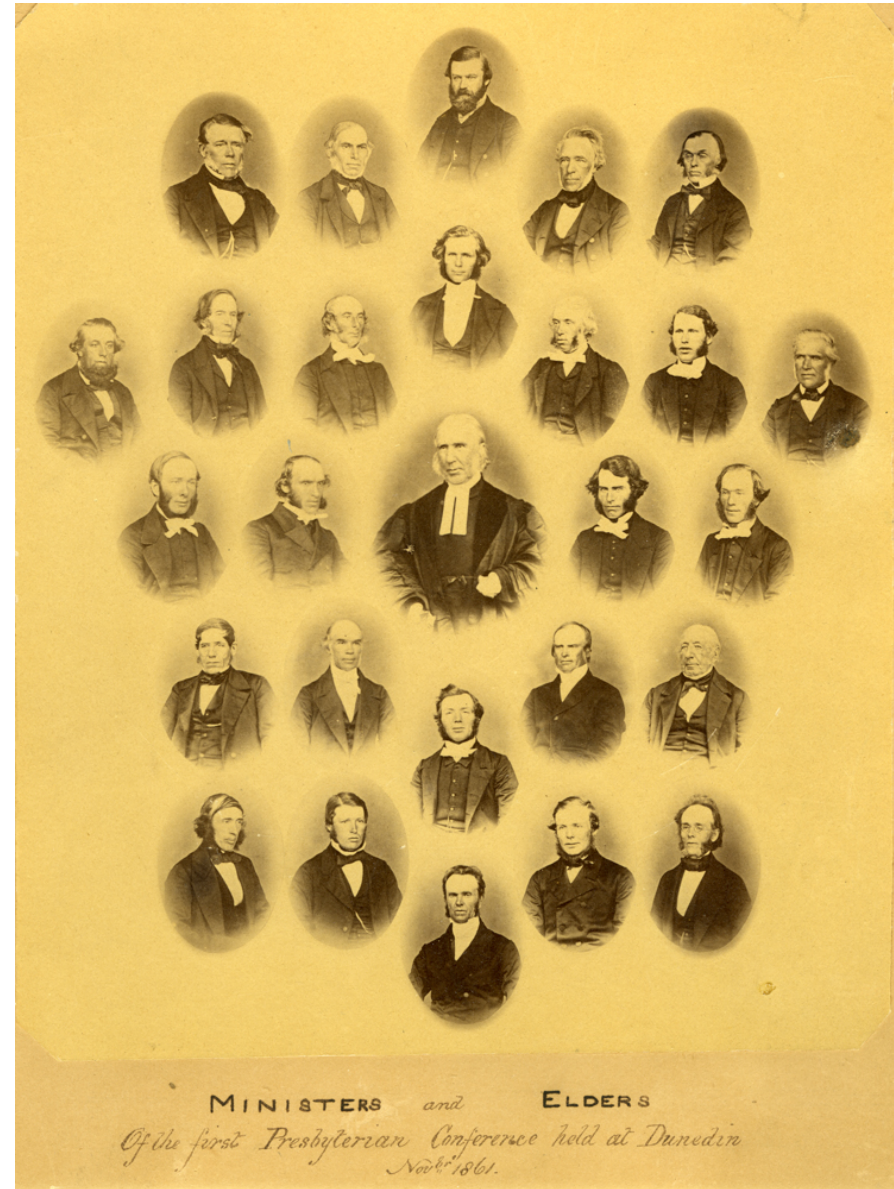
Presbyterian Church
of Aotearoa New Zealand

Presents....

- A Pictorial History of the
Synod of Otago and
Southland

Ministers & Elders Of First Presbyterian Union Conference 1861 Held At Dunedin

In 1961 Northern Presbyterian elders meet with their Southern Counterparts to discuss the issue of union between The Presbyterian Church of New Zealand and the Synod of Southland and Otago. They included The Rev. Burns, Rev. Stuart' Rev. Stobo, & Rev. Bruce with ministers from Nelson and Laymen from the North Island.



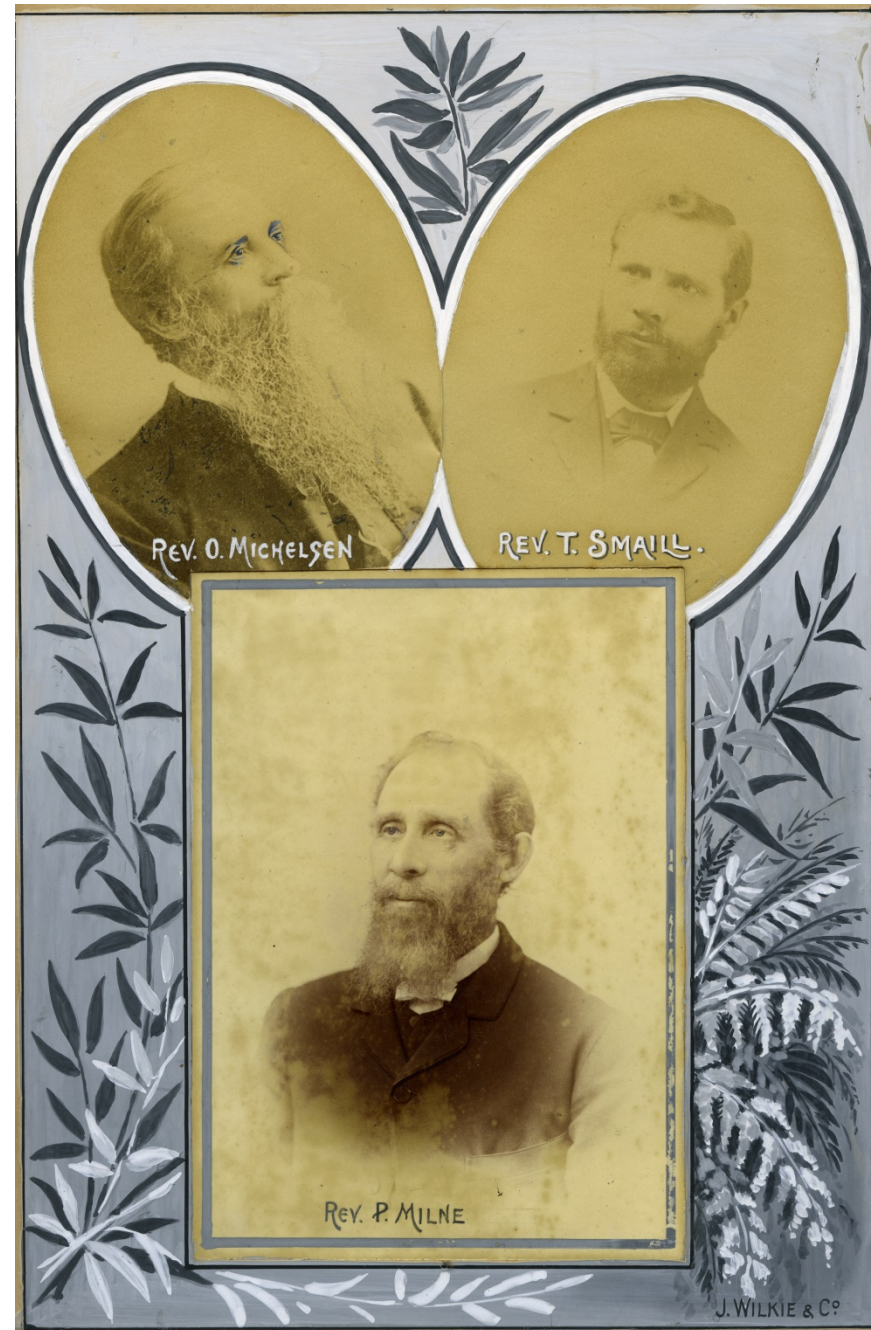
First Church under
construction-1872

First Church under
construction with
workmen around
base. It stands on
the truncated Bell
Hill and was
completed in 1873.
Designed by Robert
Lawson, its
foundation stone
was laid in 1868



Synod Of Otago And Southland Missionaries

An Original Bookplate
Containing Three Studio
Portraits Of Synod Of
Otago And Southland
Missionaries Working In
The New Hebrides,
Including- Rev O
Michelsen, Rev T Smaill,
Rev P Milne (Snr).c 1896





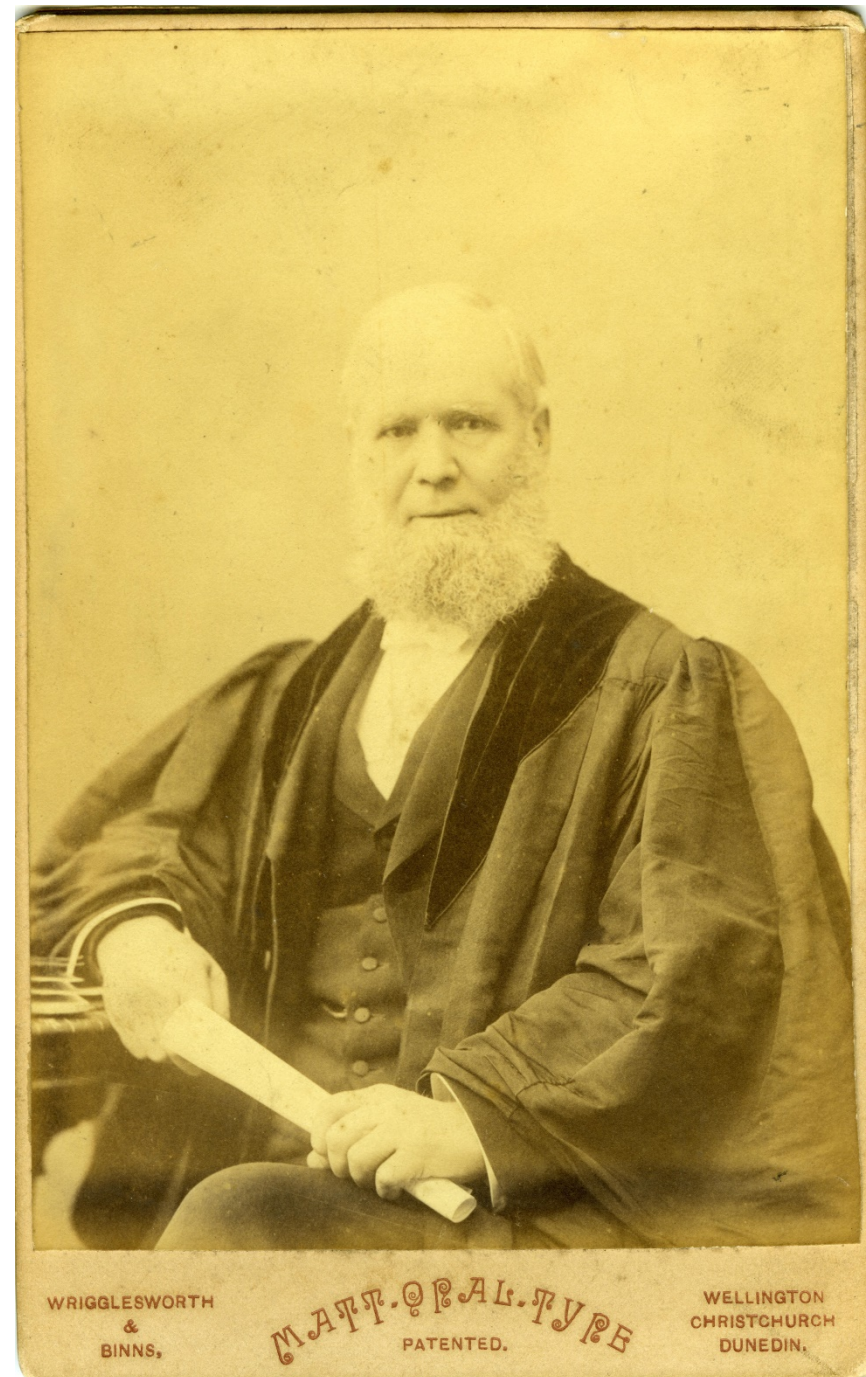
1890 Meeting Of Synod Of Otago & Southland.

Group Photo Of The Synod Of Otago & Southland,
Taken Outside 'First Church', Dunedin ; Including :
- Rev. W.M. Bannerman (Clerk Of Synod), 8.6cm From
Left Edge, In Front Row; Rev. A.M. Finlayson
(Moderator of the Synod), 12.4cm From Left, Sitting In
Chair; Rev. A.H. Stobo (6.95cm From Left In Front
Row);
Rev. P. Milne (Snr) (?) (12cm From Left, 9.8cm From
Top).
Photographer: 'Burton Bros', Dunedin.
Dated: Oct 1890

Rev. William Will.

Rev. William Will, Then
Moderator Of The Synod
Of Otago & Southland In
1898. (Dressed In A Gown,
& Holding A Rolled-Up
Piece Of Paper.)

Photographer:
'Wrigglesworth & Binns',
Dunedin.



WRIGGLESWORTH
&
BINNS,

MAT. OPTAL. TYPE
PATENTED.

WELLINGTON
CHRISTCHURCH
DUNEDIN.



1901 Meeting Of Synod Of Otago &
Southland.

- Group Photo, Taken In First Church Dunedin, Of The Synod Of Otago & Southland ; Including
- - Rev. W. M. Bannerman, (Clerk of Synod) Behind Table Covered With Papers; Rev. James Gibb (Moderator Of Synod), Behind Small Table In Front Of Pulpit; Rev. William Hewitson, To Left Of Pulpit, At Back; Rev. J. Gibson Smith, In Front Of Him, Behind Carved Barrier; Rev. Alexander Don, 14.6cm From Left Edge, 9.5cm From Top Edge; Rev. R. Fairmaid, 7.6cm From Left Edge, 4.2cm From Top Edge.



Union Committee Of Synod Of
Otago & Southland 1901

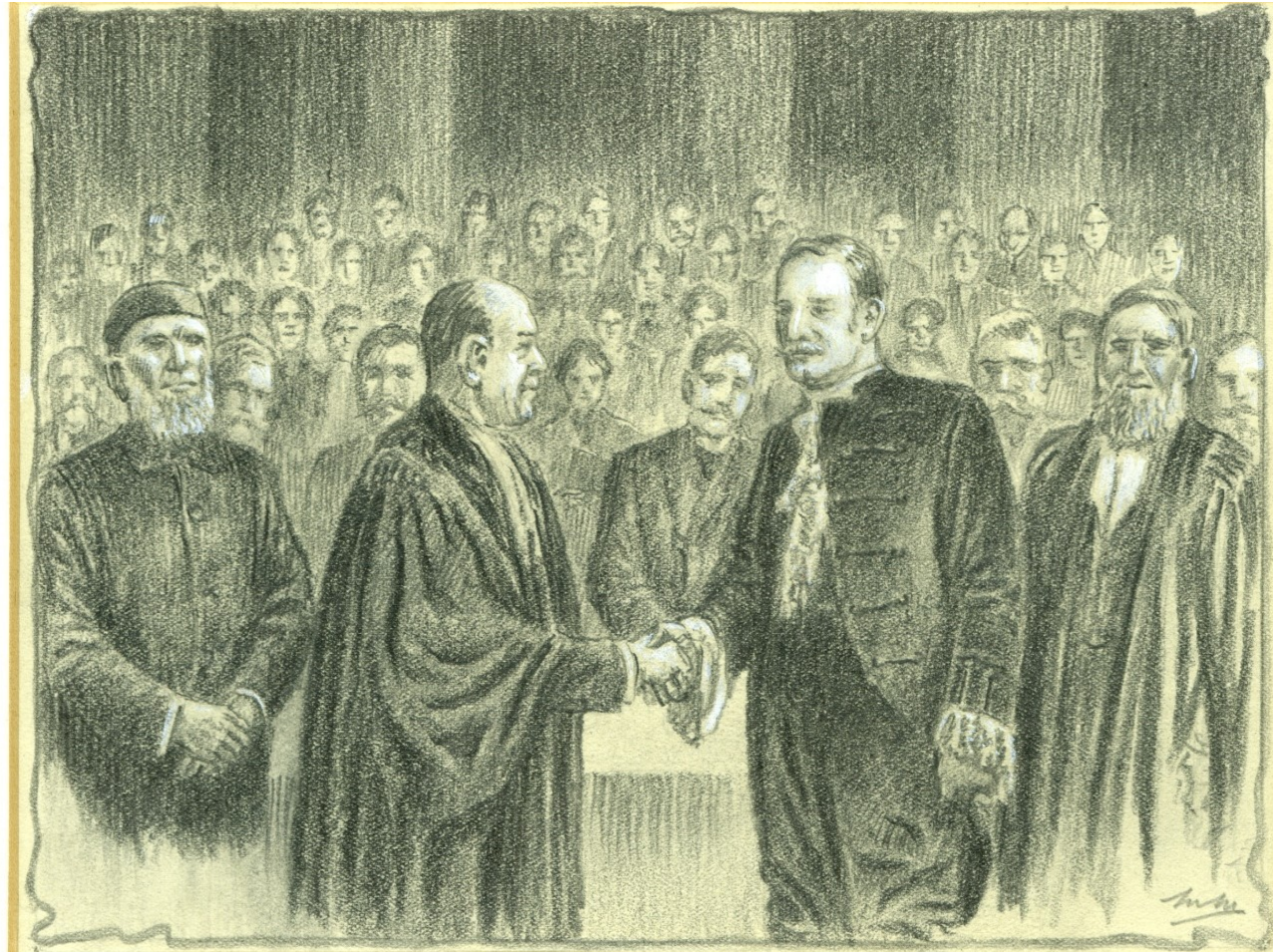
Group Photo, Taken Outside First Church Dunedin,
Of The Union Committee Of The Synod Of Otago
& Southland. Incl (Left To Right) :Back Row- Mr W.
Couston; Rev. D. Borrie; Rev. S. W. Currie; Mr E. B.
Cargill.

3rd Row- Rev. R. J. Porter; Mr T. McDonald; Rev. J.
Clarke; Rev. J. Gibson Smith; Rev. G. Lindsay; Rev.
A. Cameron; Rev. W. Nichol.

2nd Row - Rev. J. Chisholm; Rev. I. Jolly; Rev. James
Gibb; Rev. W. Will; Rev. A. M. Finlayson; Rev. W.
Hewitson.

Front Row- Mr W. H. Adams; Rev. J. Cumming; Rev.
D. Dutton; Rev. R. Fairmaid; Rev. P. B. Fraser.

Photographer: 'Guy Photo'. Dated: Nov 1901



Union Of The Presbyterian
Churches Of N.Z.

Pencil Drawing Of A Scene During The
Union Ceremony Of The Synod Of Otago
& Southland & The Northern Presbyterian
Church. Rev. J. K. Elliott Shown Shaking
Hands With Rev. J. Gibb; Including (Left
To Right) :

- Rev. Dr Sidey; Rev. J. K. Elliott; Rev. J.
Gibb; Rev. Dr. Bannerman(?)

Dated: 31/10/1901



The historic Inkwell that was used to sign the Union between The Northern Church and the Synod of Otago and Southland



The box which contains the ink set has a plaque on the front which reads:” The Inkstand and Pen contained herein, the property of the Otago Education Board, were used by Rev. J. K. Elliott and Rev. James Gibb, moderators of their respective churches, in signing the Uniting Act of Union of the Presbyterian Churches of New Zealand October 31, 1901”

And

“Presented by the Education Board of Otago, to the Theological hall of the Presbyterian Church of New Zealand, in Commemoration of this event. November 1, 1901”

The Presbyteries

Clutha



Rev. A. M. Dalrymple and Mrs Mary Dalrymple, pictured in the Manse study at Puerua. Clutha Presbyterian. C.1905



3. Down the Hill.

A traction engine pulling the Owaka Presbyterian Church down from its old site towards the road. Churches were often “on the road” and were towed as Owaka was, to its final destination

Clinton
PWMU Fete
1906



A group photograph, taken at the PWMU Fete at Clinton in 1906, the Church at rear. The banner at back reads 'Afternoon Tea'.

Mataura



Group photograph, taken beside the Church, of the Tokomairiro Minister and Office-Bearers, 1927 to 1928.

Including: Rev. Archibald McNeur (front row, 6th from left).

Session (position unknown): A. Currie (Session Clerk); J. Bruce; J. Lockhart; D. Murray; A. E. Stewart; J. Porter; W. Moore (Jnr); J. Gray; A. G. Gray; J. C. Alexander; S. D. Corston; D. Maxwell; A. Tread; (cont'd)

H. G. McClymont; D. M. Dawson; A. Mitchell; A. Pringle; L. D. Mitchell; A. B. Stewart; W. J. Cockburn.

Deacons' Court (position unknown): J. S. Inglis (Clerk of Deacons' Court); G. H. Thomson (Treasurer); E. Martin; A. Lockhart; R. Findlay; R. Bruce; W. Drinnan; J. A. Stewart; D. A. Drinnan; W. M. Allison; J. Murray; S. Martin; N. Read; T. Groundwater; W. Read (Jnr); E. Moore; G. Alexander.

Kelso Parish
90th
Anniversary



A view outside Heriot Presbyterian Church
after a Parish 90th Anniversary service. 1978

Parish picnic at Kaiwera



Outdoor group photograph, taken during a Pukerau Parish picnic at Kaiwera. Possibly Rev. J. G. McLeod (seated at the right of the group, second row, holding a young boy on his lap). c. 1902

Southland



Bluff Busy Bees.
1909

Copy of a group photograph of the Bluff 'Busy Bees' - the first 'Busy Bee' Hive in New Zealand.

Including: (left to right) Evie Imlay; Gladys Urwin; Dorothy Laishley (1st Secretary); Muriel Laishley (1st Queen Bee); Mabel McKenzie (1st Treasurer); Lexie Matheson (In Front); Clara Musson (of St. Pauls, Invercargill).

Duplicates: P-S6-24 (original)



Oreti Parish group

Outdoor group photograph, presumed to be members of the Oreti Parish.

Reverse: dates and sums of money have been recorded in pencil on the reverse of print.



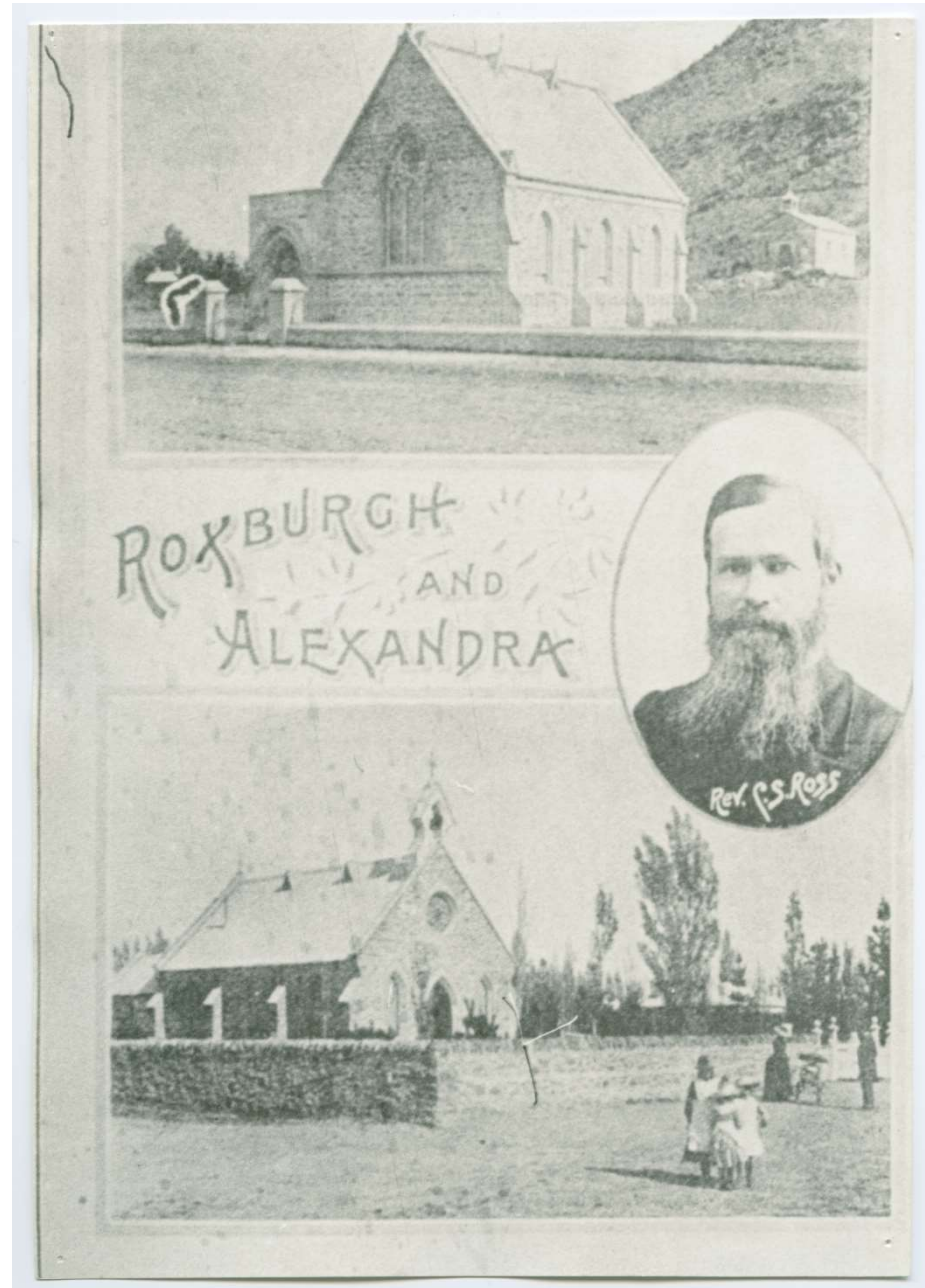
70th Anniversary of creation of Southland Presbytery

Group photograph of members of Southland
Presbytery, gathered on 70th Anniversary.

- Actual anniversary on 5/4/1935; Celebrated on
31/7/35.

Central Otago

Photographic copy of
an illustrated page
from the publication
"Fifty Years Syne",
showing Roxburgh
Church, Rev. Charles
S. Ross, and the
Alexandra
Presbyterian Church.





ST. ENOCH'S CHOIR, 1914.
Choirmaster, D. W. H. Moorhead. Minister, Rev. F. R. Blue.

Copy of a printed photo of the
Alexandra Presbyterian Church Choir.
1916.

Celebrations



Mataura Presbytery.

Meeting of the Mataura Presbytery for
the Synod Cenntenial-1948



1948 Synod of Southland and Otago Celebrations

Mr E. M. Jarris (at left), representing South Africa, and the Rev. J. D. Smith (at right), taken during the 1948 Centennial Synod Celebrations.



Four Moderators At The Centennial Synod. 1948

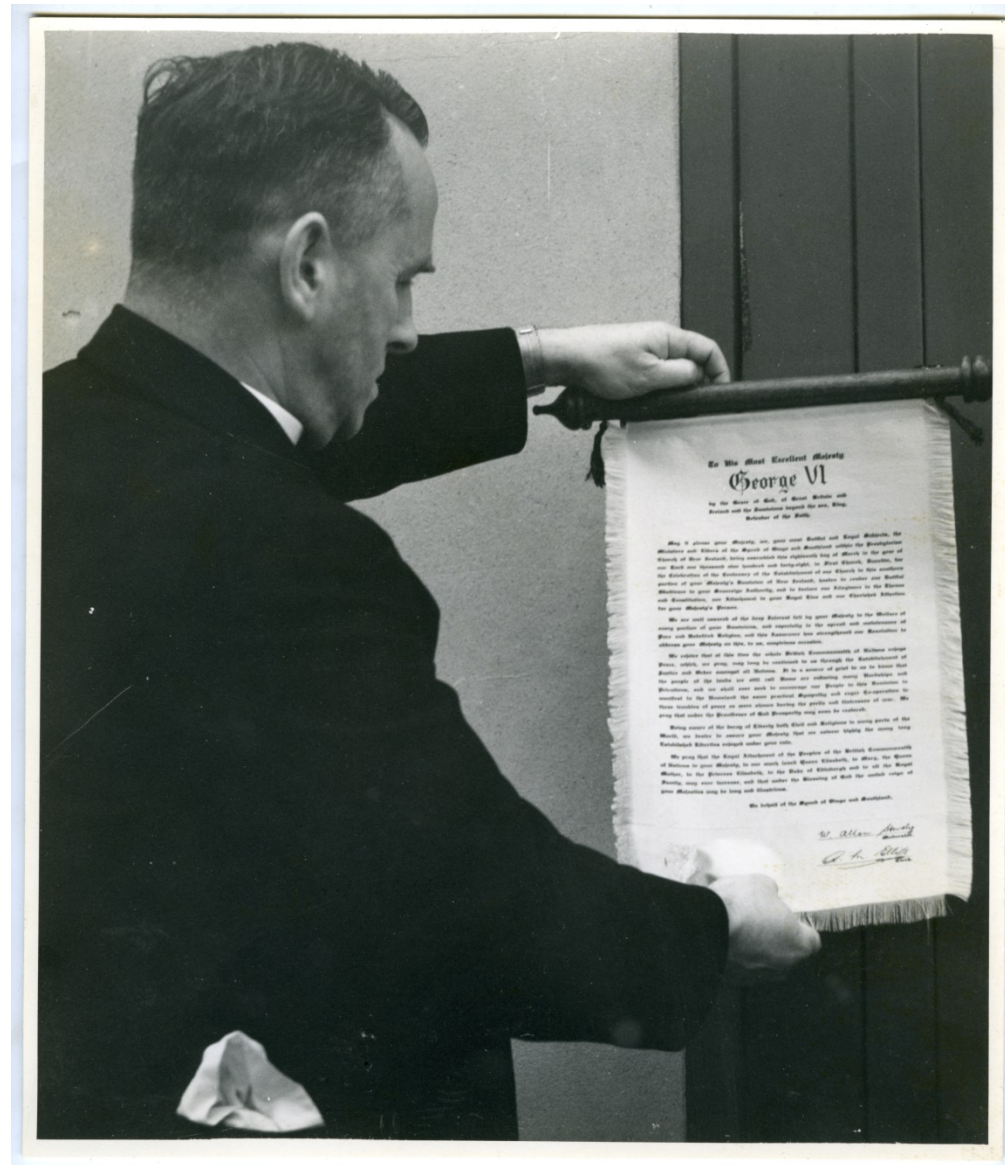
The Four Moderators Who Attended The Centennial
Synod Of The Synod Of Otago & Southland,
Pictured During The Celebrations At First Church ;

Incl (Left To Right) :

- The Very Rev. W. Purves Boyes (Presb. Church Of England); The Very Rev Dr John Bailie (Church of Scotland); The Very Rev. W A Stevely (Synod Of Otago & Southland); The Rt. Rev. A. Campbell Grieve (Presb. Church Of Australia).

Loyal Address To King George VI

The Rev A M Elliffe
Holding An Address,
Written On Fabric, To
King George VI From
The Synod Of Otago
And Southland.1948



SYNOD OF OTAGO AND SOUTHLAND



CENTENNIAL SYNOD DUNEDIN MARCH 1948
REV. W. A. STEVELY MODERATOR

Centennial Synod Group At Dunedin.

Group Photo Of Ministers, Elders &
Guests Who Attended The Centennial
Synod At 'First Church', Dunedin.
Photo Taken On The Lawn Between
Burns Hall & The Church.
Dated: Mar 1948



Visit of the Queen Mother-1966

Queen Elizabeth, the Queen Mother, leaving First Church with the official party after the service.

Including: Lady Ferguson (11.7cm from left, 12.1cm from top); Rev. E. M. Sherrard (9.5cm from left, 12.2cm from top); Queen Elizabeth, the Queen Mother (10.7cm from left, 12.7cm from top); Sir Bernard Ferguson (11.3cm from left, 11.7cm from top); Rev. S. S. Smale (12.7cm from left, 12.3cm from top).



Esther House Orphanage Girls

Outdoors group photograph of the girls
from the Esther House Orphanage, Khon
Khaen, Thailand. c. 1999

They are supported by donations from the
parishes in the Southern Lakes area

Synod 125th Floral Display- 1991

A floral display representing the Presbyterian Church Burning Bush, pictured at the corner of Albany & George Street, Dunedin, planted by the Dunedin City Council to commemorate the 125th Anniversary of the Synod of Otago & Southland, formed 1866





The Billy Graham Crusade

A train from Invercargill Carrying Billy Graham Supporters, arrives in Dunedin. 1969



The crowd filled the stands.

Induction of Miss Audrey Roby

Group photo of Nola
Stuart (at left), Convener
of the Council of
Assembly, and Miss
Audrey Roby (at right),
taken in First Church
Invercargill on the
occasion of her
induction as Moderator
of Synod.





Guests at the Synod of Otago and Southland
Centennial Celebrations Having A Group Photo
taken By The Front Entrance to First Church,
Dunedin. 1966



Miss Gladwys Syder, The Organist At The
Synod OF Otago And Southland
Centennial Thanksgiving Service In The
Dunedin Town Hall, Pictured Sitting At
The Organ Console

The End

If you can identify any of the people in the photographs, or want to know about any of these images, please contact the Presbyterian Research Centre-Archives Ph(03)473 0777

Contact

pcanzarchives@knoxcollege.ac.nz